



# SOFTKEY Series SK110-255BX

## SYSTEM

110 watt compact fluorescent unit for Video/Tele Conferencing multi use spaces. The recessed or surface mount 2' x 2' housing shrouds an adjustable fixture that provides controlled aiming for key, or fill lighting. The adjustable fixture is tension held and rotates 359° and tilts 130°. A variety of beam angles and intensity may be achieved by utilizing accessory options. All 230 volt fixtures are RoHS compliant.

UL/CUL/CE Listed

## SPECIFICATION

**2x2 Shroud:** Constructed of 20 gauge CRS coated with white TGIC polyester powder coat finish.

**Fixture Housing:** Constructed of .063 formed aluminum then coated with white TGIC polyester powder coat finish.

**Reflector:** Formed .020 high purity aluminum (99.9%) reflector material with 95% reflectance finish.

**Socket:** Molded white high strength thermoplastic with push wire connections and 18 gauge leads. Model number 2G11 4-pin.

**Electrical:** Unit contains (1) 2-lamp dimming ballast to drive two 55 watt lamps for a total of 110 lamp watts per fixture. Power factor shall be >.97 with a class A sound rating and THD of <20%. Unit will be hard wired.

**Mounting:** Unit may be ordered recessed for T-Bar or Gypsum ceiling installations or Surface mounted.

### Fixture Includes:

- (2) 55 watt Biax Lamps
- (1) 2-Lamp Ballast (Specify Voltage)
- (1) White Zone Control Screen (Wide)

## LAMPS

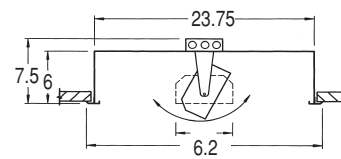
(2) 55 Watt FT55W/2G11/830  
3000K, 12,000 Hours Lamp Life  
CRI: 82  
Light Output: 4800 LM/Lamp

## OPTIONS (Must Specify Each)

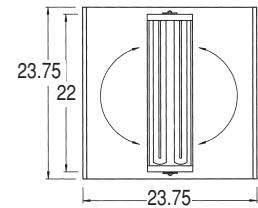
Ballast 120 VAC/60Hz HPF Electronic Dimming  
230 VAC/50-60Hz 0-10V HPF Electronic Dimming  
277 VAC/60Hz HPF Electronic Dimming

Mounting T-Bar  
Gypsum / Hard Ceiling  
Surface

Lamps 3000K (Included as Standard)  
3200K (Additional charge)  
5500K (Additional charge)



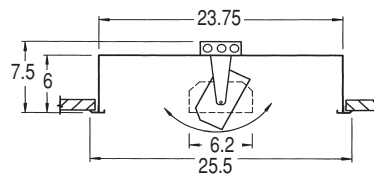
Side View



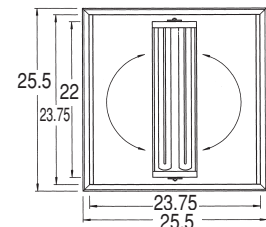
Face View

### MODEL # for Recessed T-Bar Ceiling

SK110-255BX-TB-DA 0-10 Analog Dim  
SK110-255BX-TB-D/PM\* Phase Control Dim



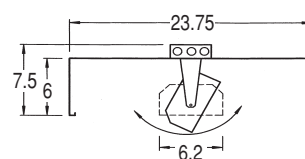
Side View



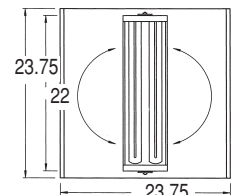
Face View

### MODEL # for Recessed Gypsum Ceiling

SK110-255BX-R-DA 0-10 Analog Dim  
SK110-255BX-R-D/PM\* Phase Control Dim



Side View



Face View

### MODEL # for Surface Mount

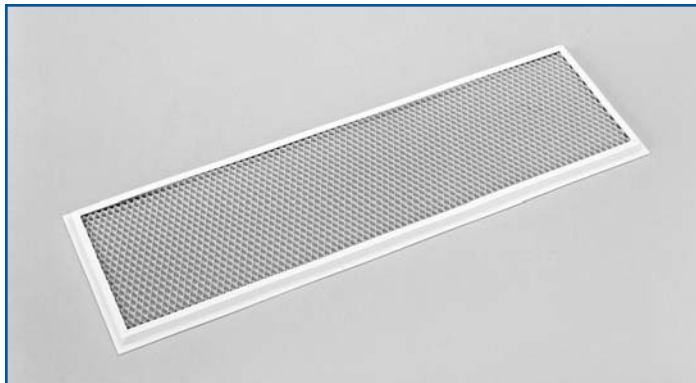
SK110-255BX-S-DA 0-10 Analog Dim  
SK110-255BX-S-D/PM\* Phase Control Dim

Measurements shown are inches (B.S.U.) Ref: 1"=2.54cm

\* Not available in 230 Volt

## ACCESSORIES

(See detailed description and function in Accessories Section)



### PART #

① ZS-SK110-W-W White Zone Control Screen Wide

### FIXTURE

WEIGHT	Lbs	Kg	DIMENSIONS	Inches	Cm
				Complete	25
			Height	6	15.2
			Width	23.75	60.3

## PHOTOMETRICS

2-02		DISTANCE				
MODEL SK110-255BX		3ft/.91m	6ft/1.83m	9ft/2.74m	12ft/3.66m	15ft/4.57m
NO ACCESSORIES	FC	298	75	33	19	12
	Lux	3208	807	355	205	129
White Wide Zone Screen	FC	331	83	37	21	13
	Lux	3563	893	398	226	140

Light level readings were measured in foot-candles (fc) and converted to Lux using the conversion factor of 1 fc = 10.765 Lux. Values shown are light levels on centerline. Reference: Meter used—Minolta T-1 Illuminance meter. Lamps: 3000 Kelvin. Ambient temperature in test studio 75F ±3F. Distance measurements converted to feet using 1ft = .305m. Original photometric data on file at the factory. Specifications subject to change without notice or obligation.